

# Project Management

---

## Miscellaneous Q&As (1)

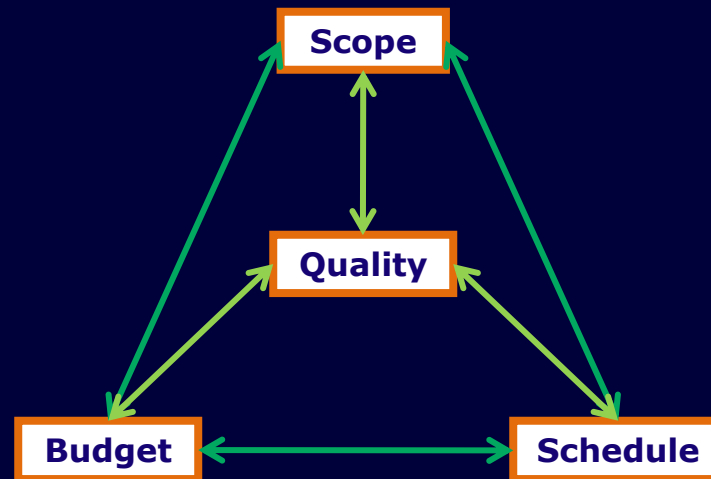
[neil@minkley.fr](mailto:neil@minkley.fr)

# Question 1

- A **project** is a unique endeavour to produce a set of deliverables within clearly specified ....., cost and quality constraints.

# Answer 1

- A **project** is a unique endeavour to produce a set of deliverables within clearly specified **time**, cost and quality constraints.

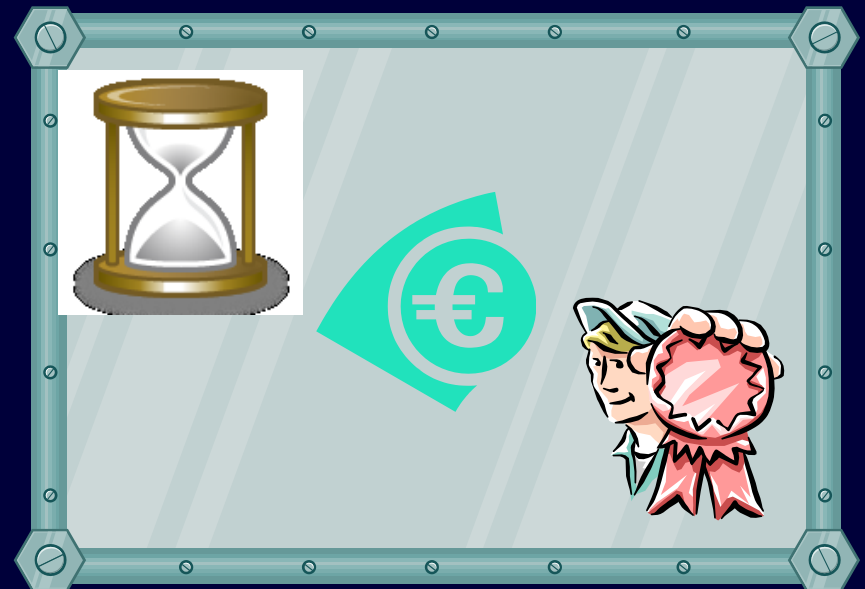


## Question 2

- A **project manager's basic goal** is the successful completion of her/his project in compliance with its scope, schedule, ..... and quality requirements, in order to meet customer expectations.

## Answer 2

- A **project manager's basic goal** is the successful completion of her/his project in compliance with its scope, schedule, **budget** and quality requirements, in order to meet customer expectations.

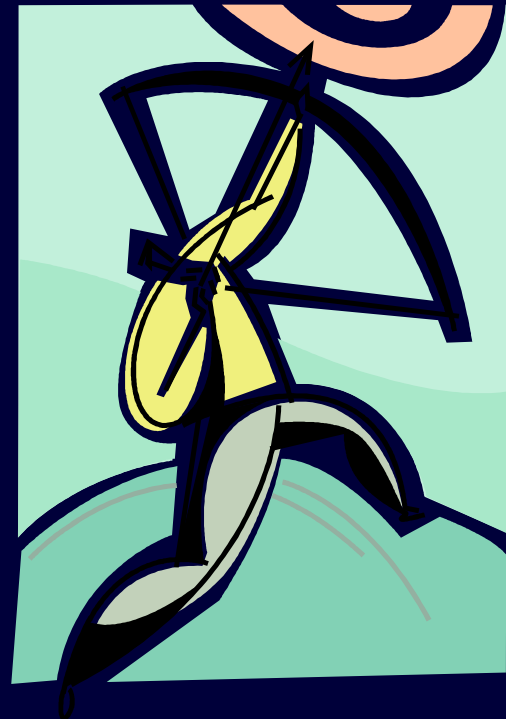


## Question 3

- Any **objective** should be "**SMART**", ie Specific,  
....., Attainable, Realistic and  
Time-bound.

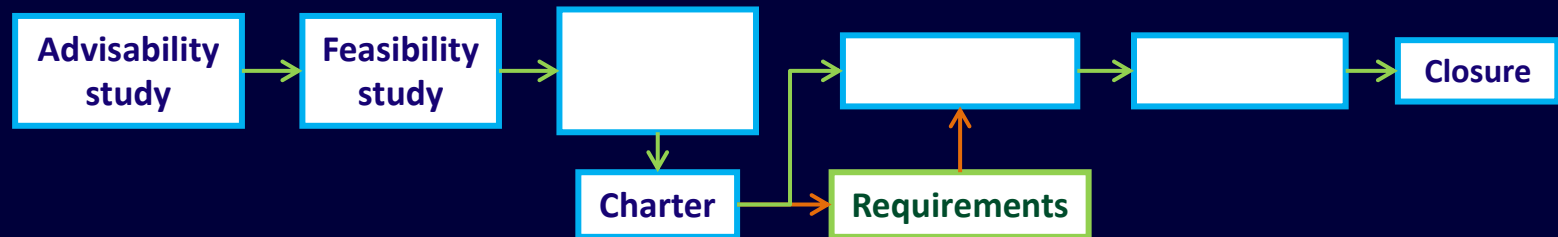
# Answer 3

- Any **objective** should be "**SMART**", ie Specific, Measurable, Attainable, Realistic and Time-bound.



# Question 4

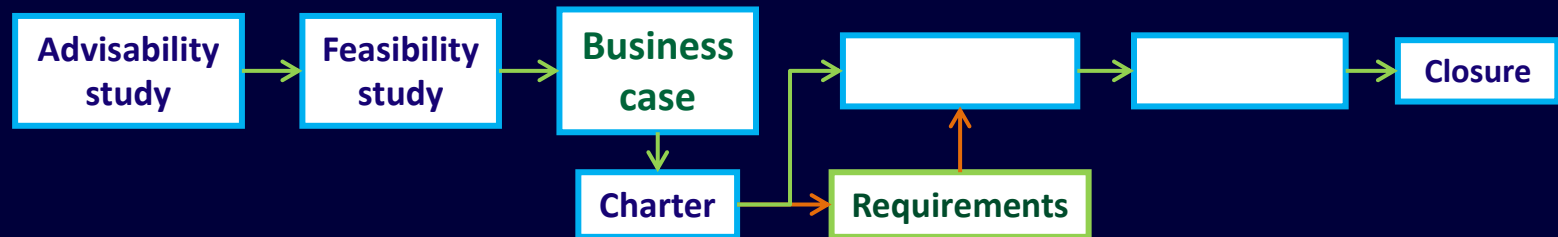
- Mentally fill in the 3 empty rectangles in the following simplified diagram representing the main phases of the life cycle of a project.





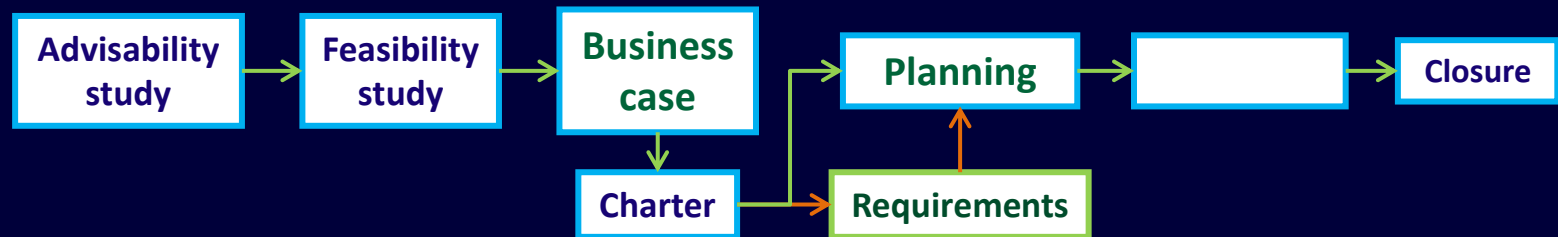
# Answer 4 (1)

- Mentally fill in the 3 empty rectangles in the following simplified diagram representing the main phases of the life cycle of a project.



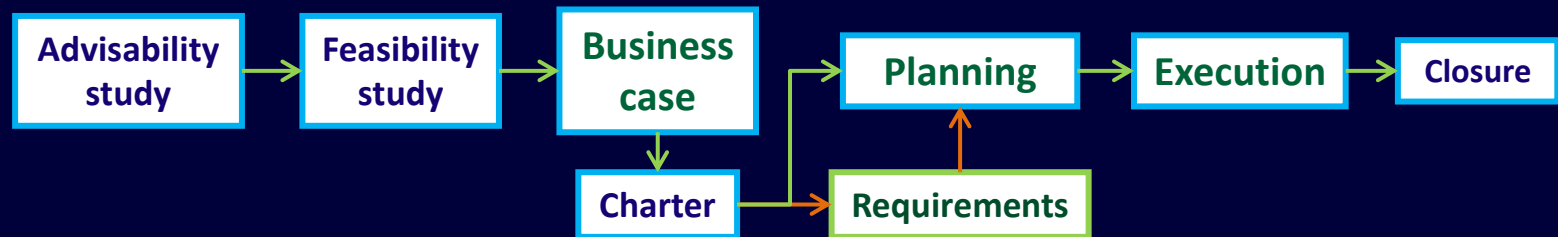
# Answer 4 (2)

- Mentally fill in the 3 empty rectangles in the following simplified diagram representing the main phases of the life cycle of a project.

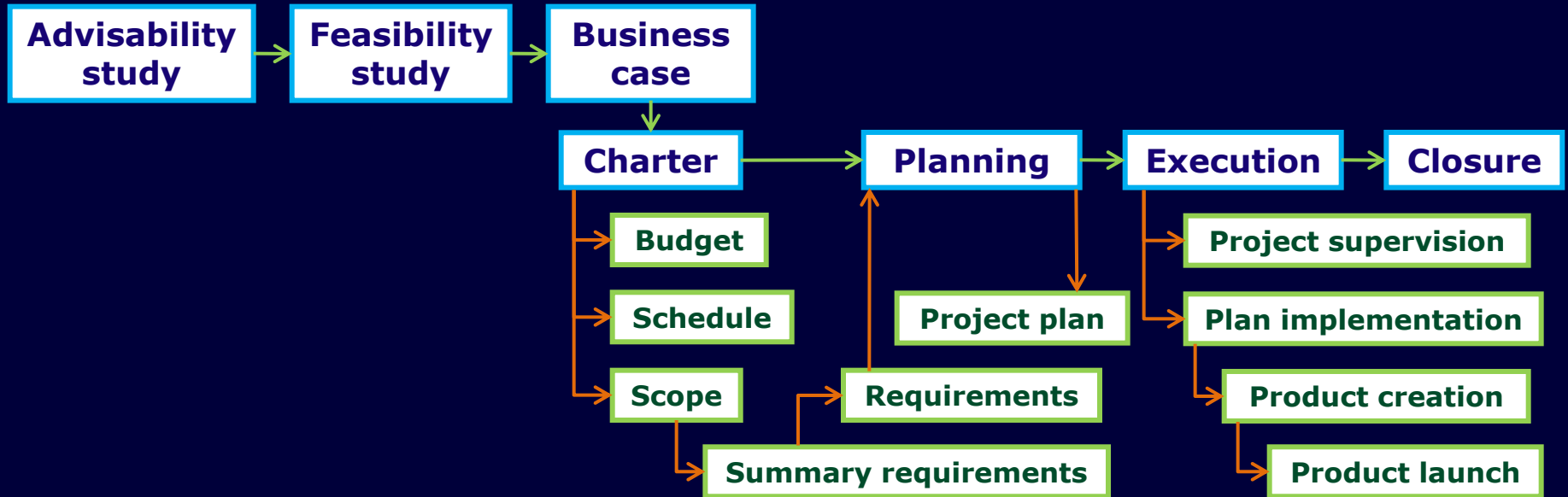


# Answer 4 (3: complete)

- Mentally fill in the 3 empty rectangles in the following simplified diagram representing the main phases of the life cycle of a project.



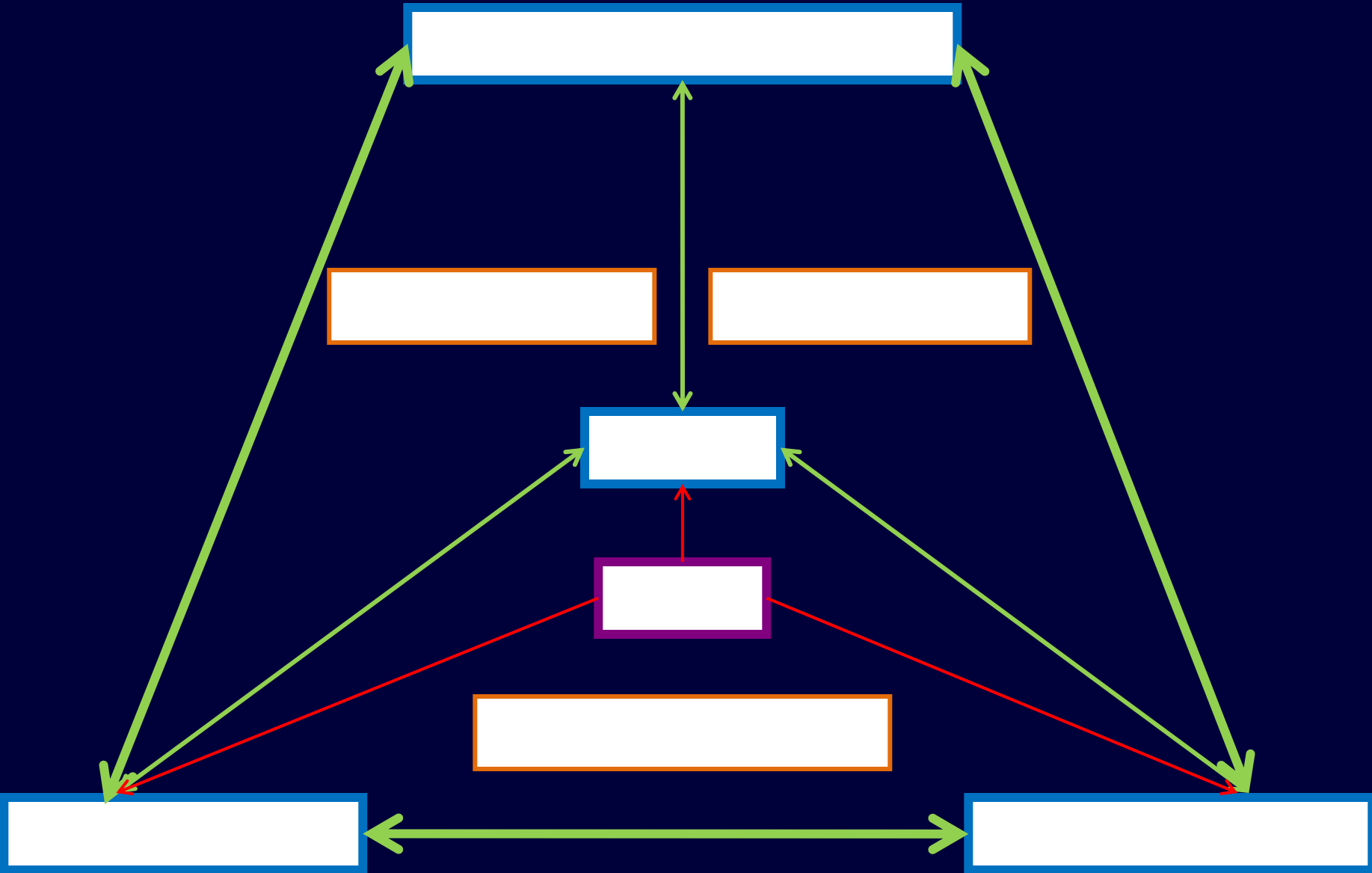
# Reminder: project life cycle summary



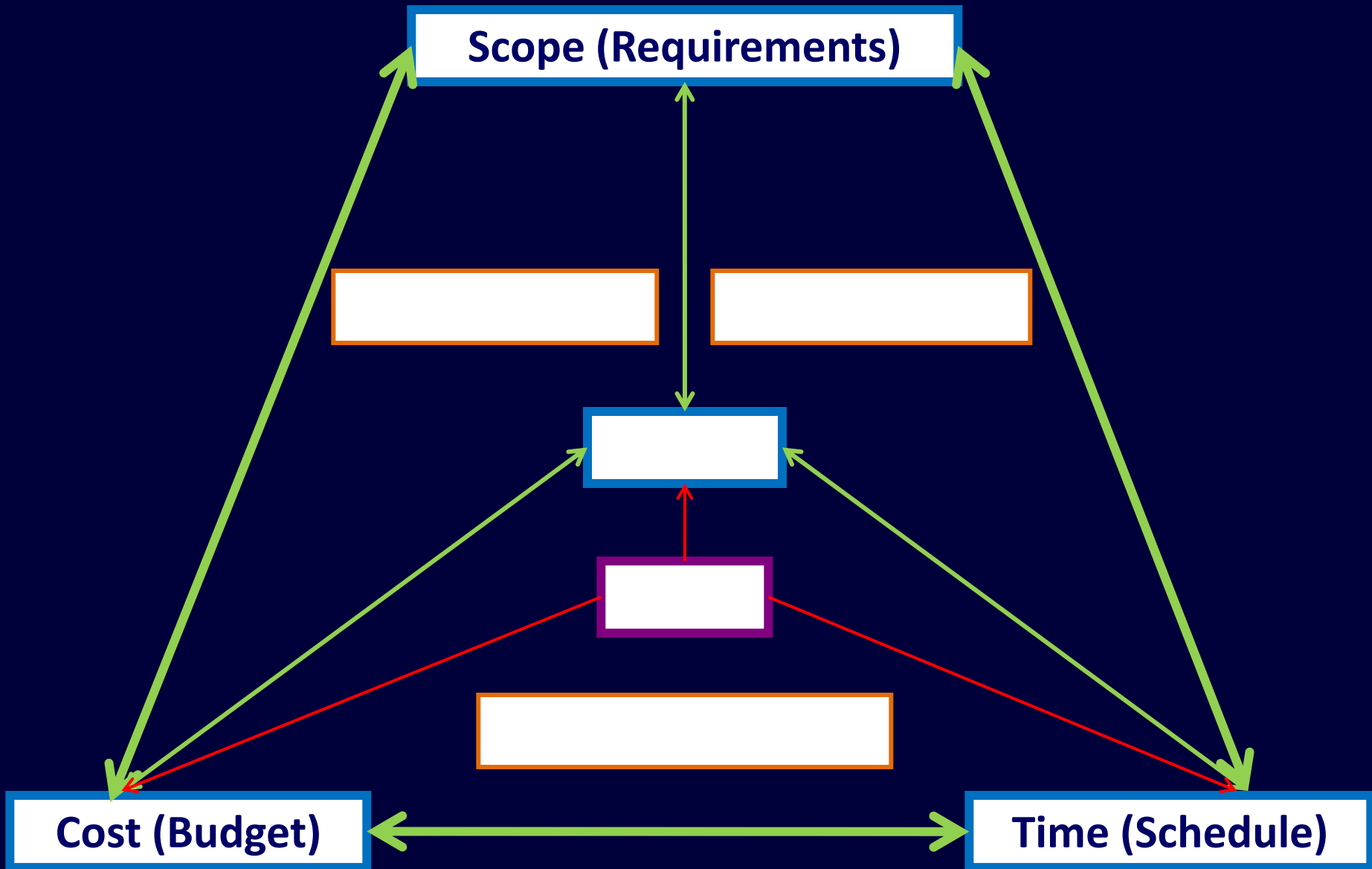
## Question 5 – text

- Mentally fill in the rectangles in the diagram on the next page with the names of the **main 8 areas of project management.**

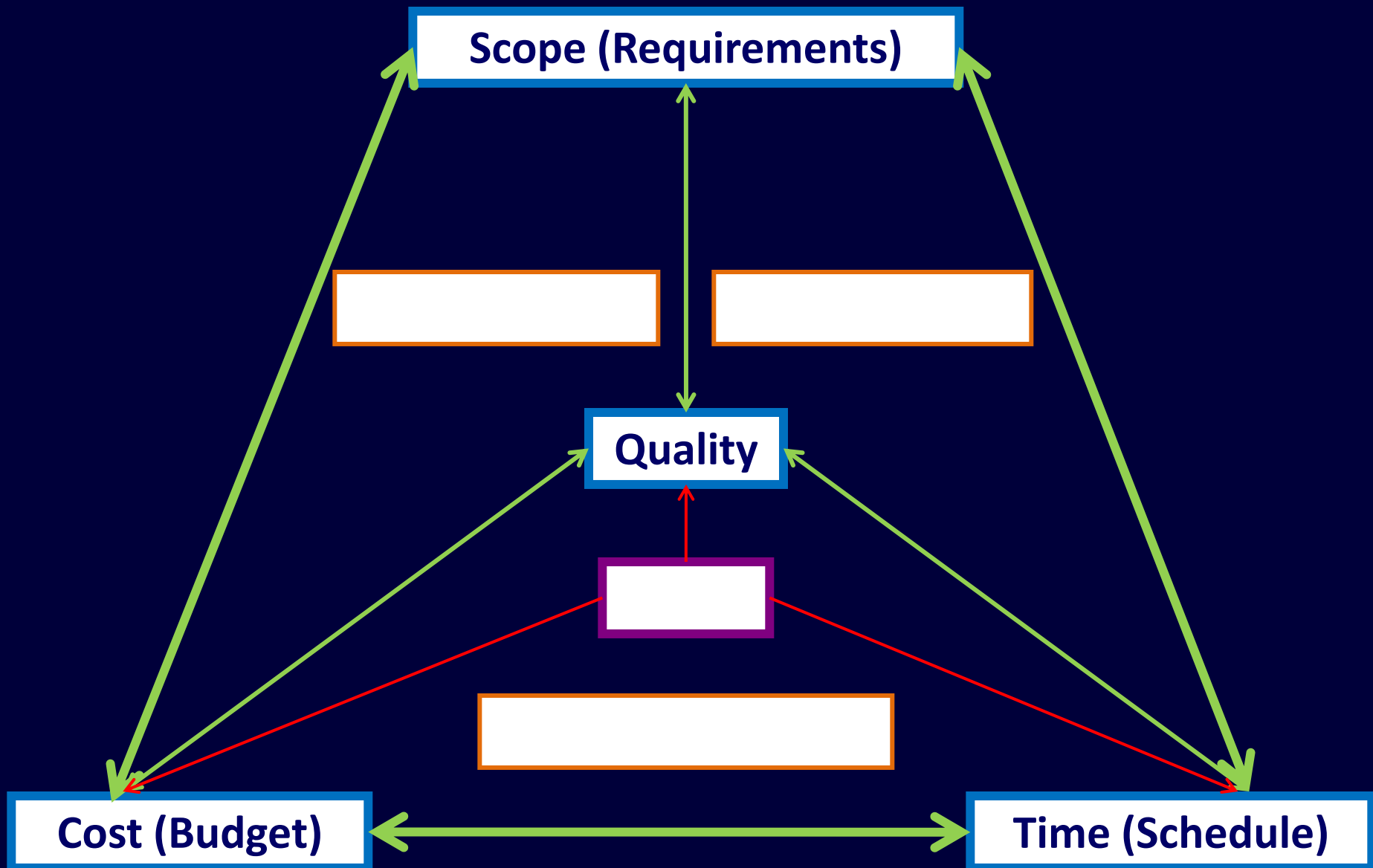
# Question 5 – diagram



# Answer 5 – diagram (1)

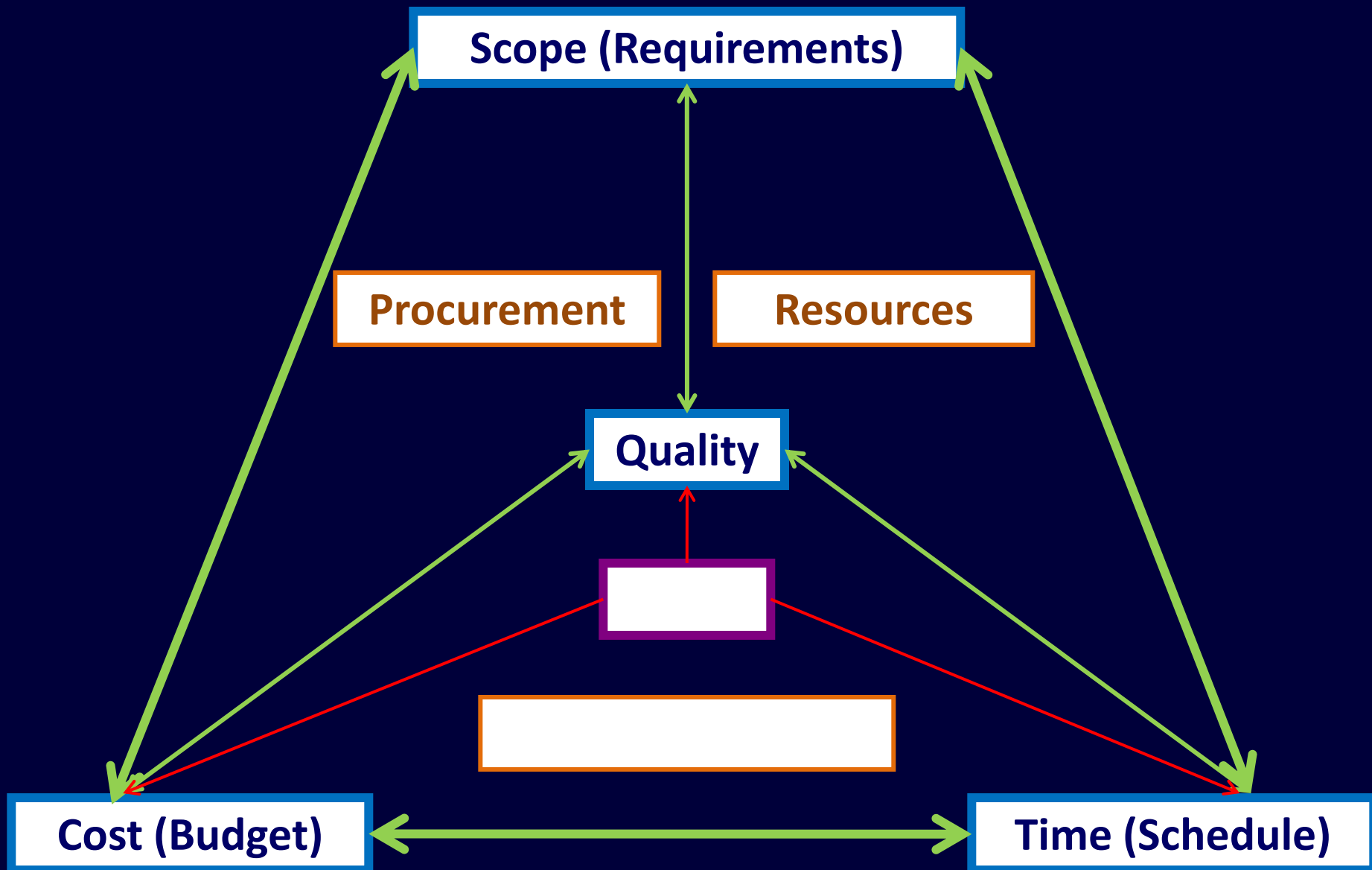


# Answer 5 – diagram (2)

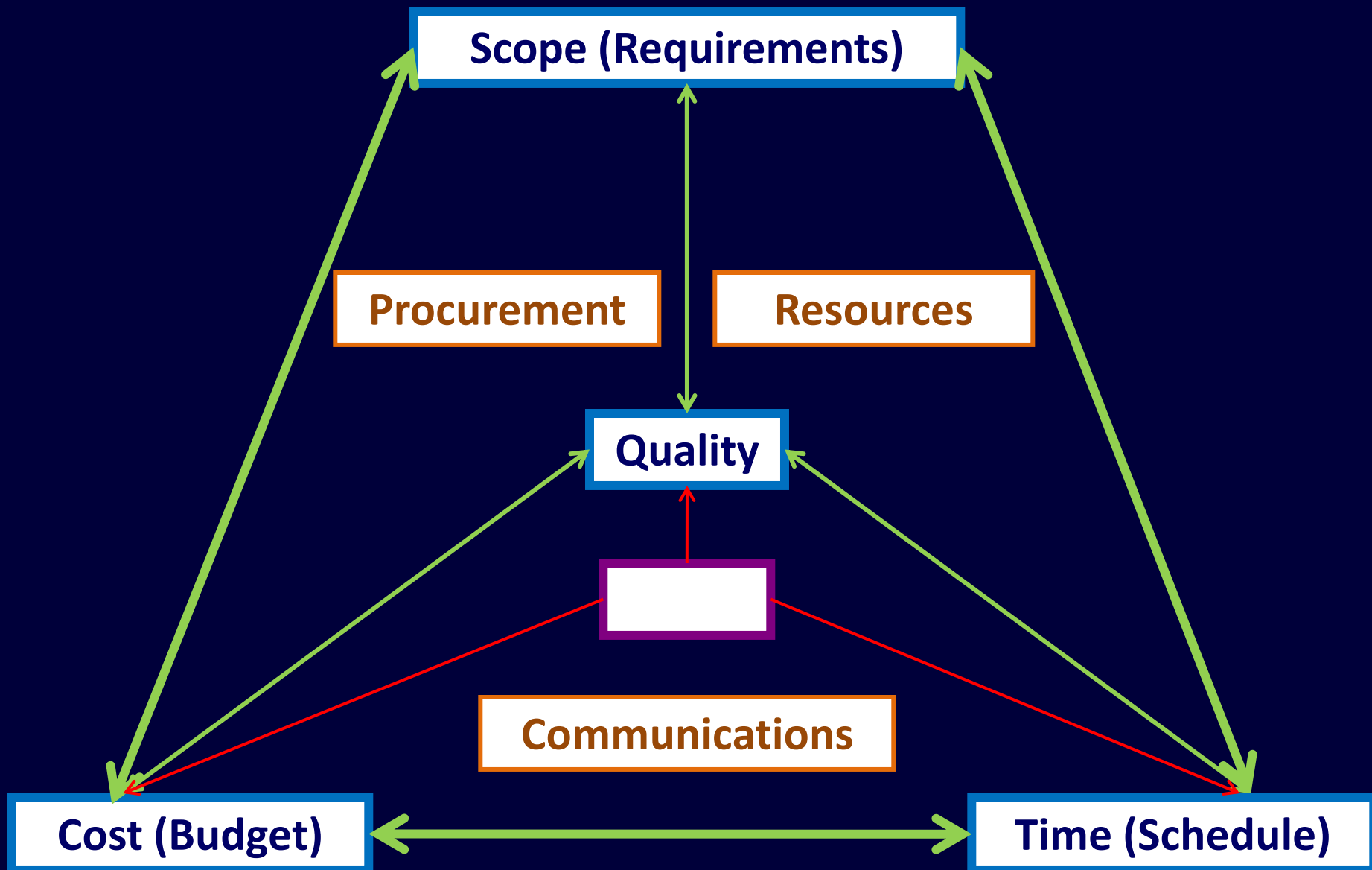




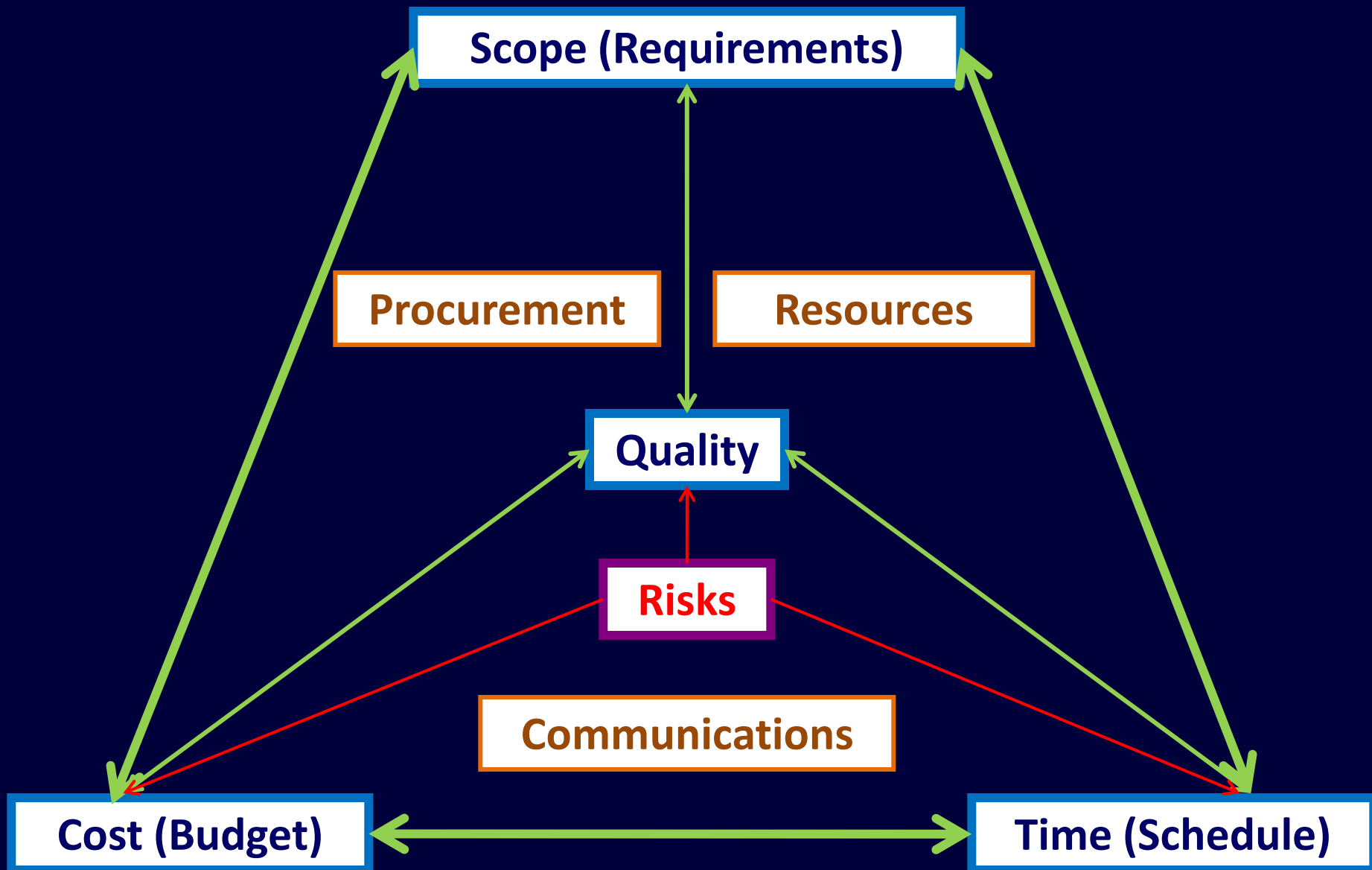
# Answer 5 – diagram (3)



# Answer 5 – diagram (4)



# Answer 5 – diagram (5: complete!)



## Question 6

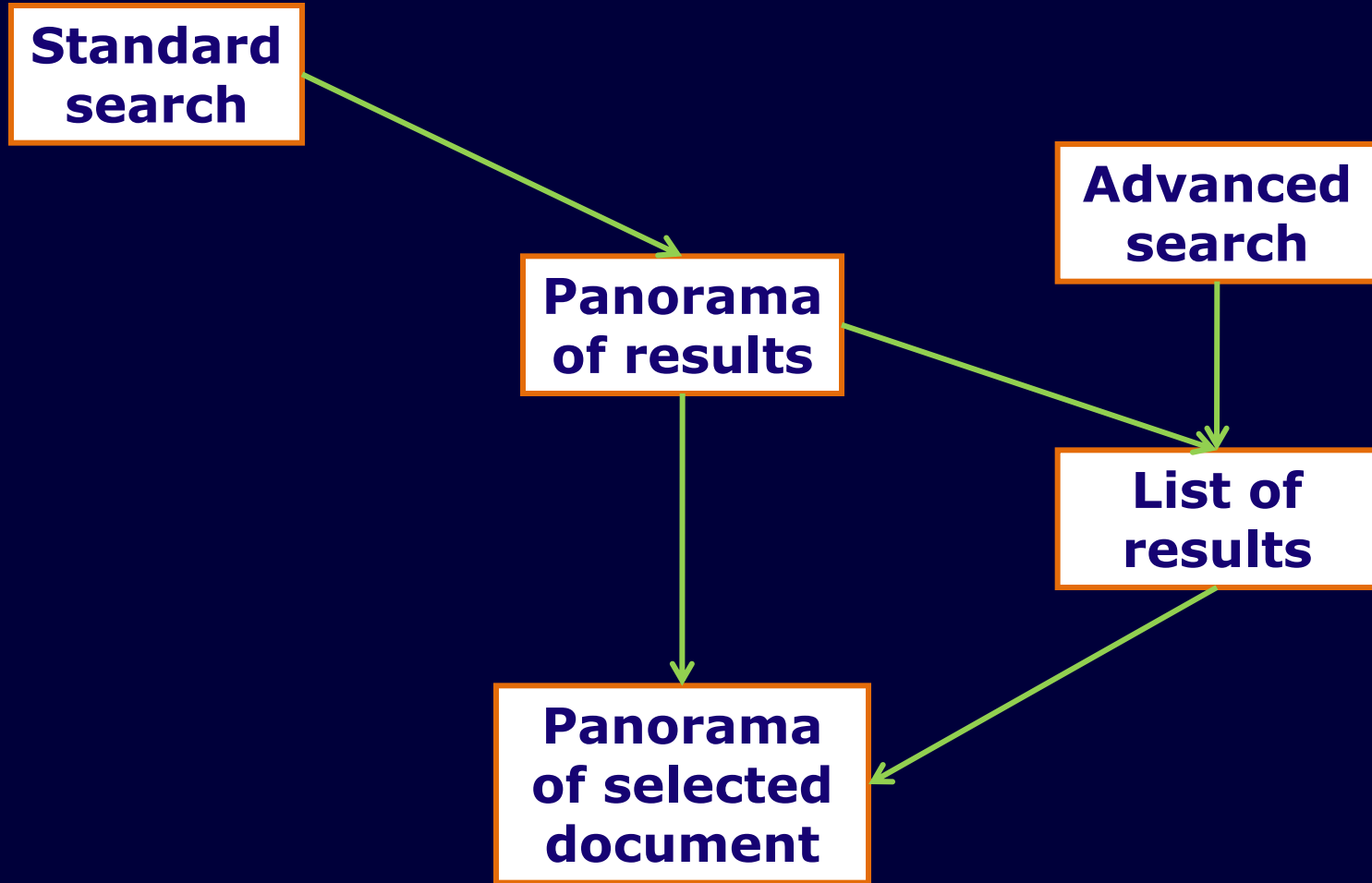
- A **requirements specification** describes the expected result of a project, for example the **functionality** (functions & features) of a **product**. Such a **description** can be given in the form of **narrative text**. In what **other form** can a product's functionality be effectively described and summarized?

## Answer 6

➤ A **requirements specification** describes the expected result of a project, for example the **functionality** (functions & features) of a **product**. Such a **description** can be given in the form of **narrative text**. In what **other form** can a product's functionality be effectively described and summarized?

→ **In graphical form**

# Example: graphical representation (1)



# Example: graphical representation (2)

## Top banner

Standard search

Other functions

## Central area

Preview of rank 1 result

[More...](#)

Preview  
of rank 2  
result

[More...](#)

Preview  
of rank 3  
result

[More...](#)

Preview  
of related  
media

Advanced search

Search by topic

Switch to list

Other links

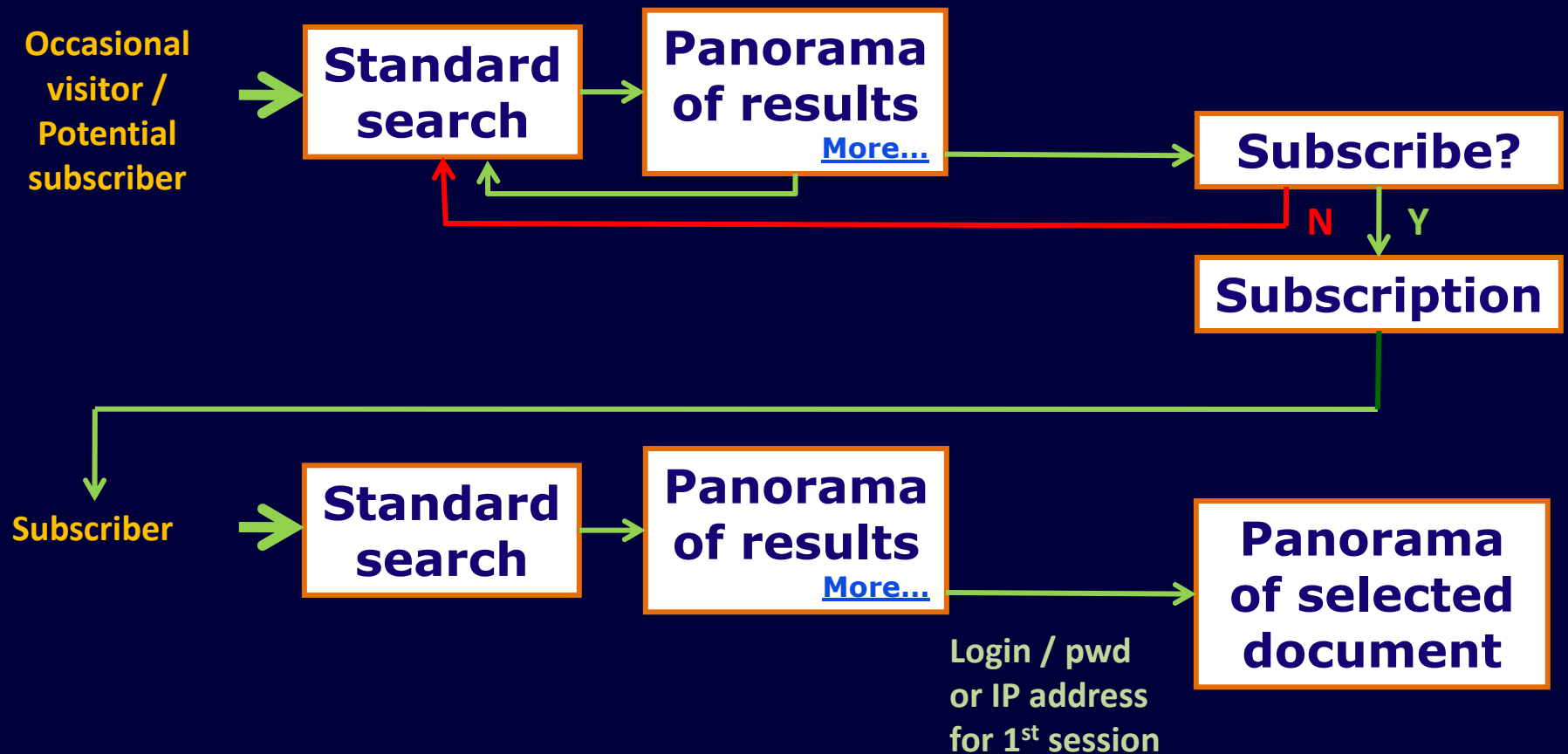
Other  
documents  
preview

Other links

## Left area

## Right area

# Example: graphical representation (3)





## Question 7

- The “4 Ps” of the marketing mix correspond to “Product”, “.....”, “Place” and “Promotion”.

# Answer 7

- The “4 Ps” of the marketing mix correspond to “Product”, “Price”, “Place” and “Promotion”.



## Question 8

- Does the **business model** adopted for a product have any **influence on the design and development** of the product?

No

Yes

# Answer 8

- Does the **business model** adopted for a product have any **influence on the design and development** of the product?

No

Yes

# Reminder: price and business model

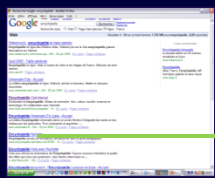
- Market demand & supply
- Direct impact on product
- Sales channels
- How revenue is generated



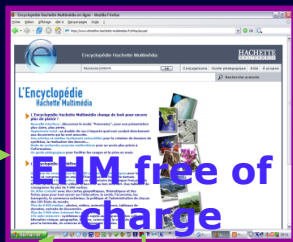
GENERAL PUBLIC (DIRECT)

# Online EHM Business Model

INSTITUTIONS (DIRECT)



Search engines, eg Google, with keyword encyclopédie



EHM free of charge



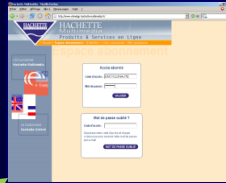
HM site



Subscription

Subscribers

Authentication



Intranets, eg Lagardère



Public libraries, eg Ville de Massy



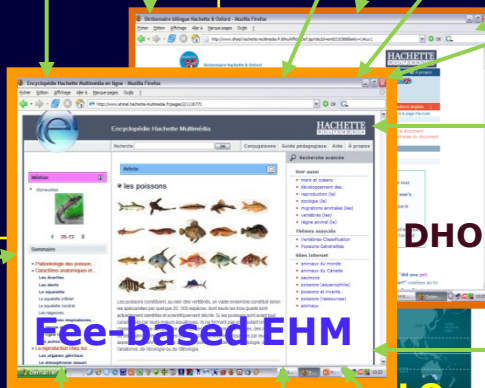
Businesses, eg Le Figaro (editors)



Institutions abroad, eg LearnAlberta



Institutions abroad, eg Institut canadien du service extérieur



Fee-based EHM

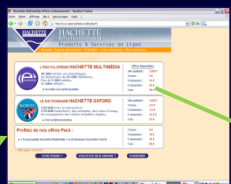
DHO

LOs



Subscription

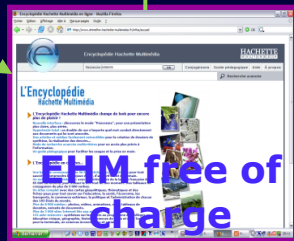
Club-Internet subscribers



Subscription



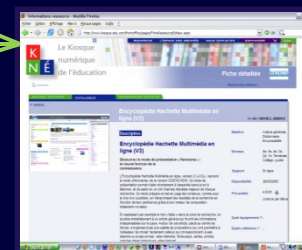
Affiliated site users, eg (hypothetical) Le Monde



EHM free of charge

Authentication

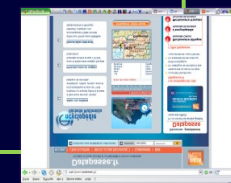
Subscribers



French schools via the KNÉ



Canadian institutional customers via De Marque



Business customers via DataPasse (IDM)

GENERAL PUBLIC (INDIRECT)

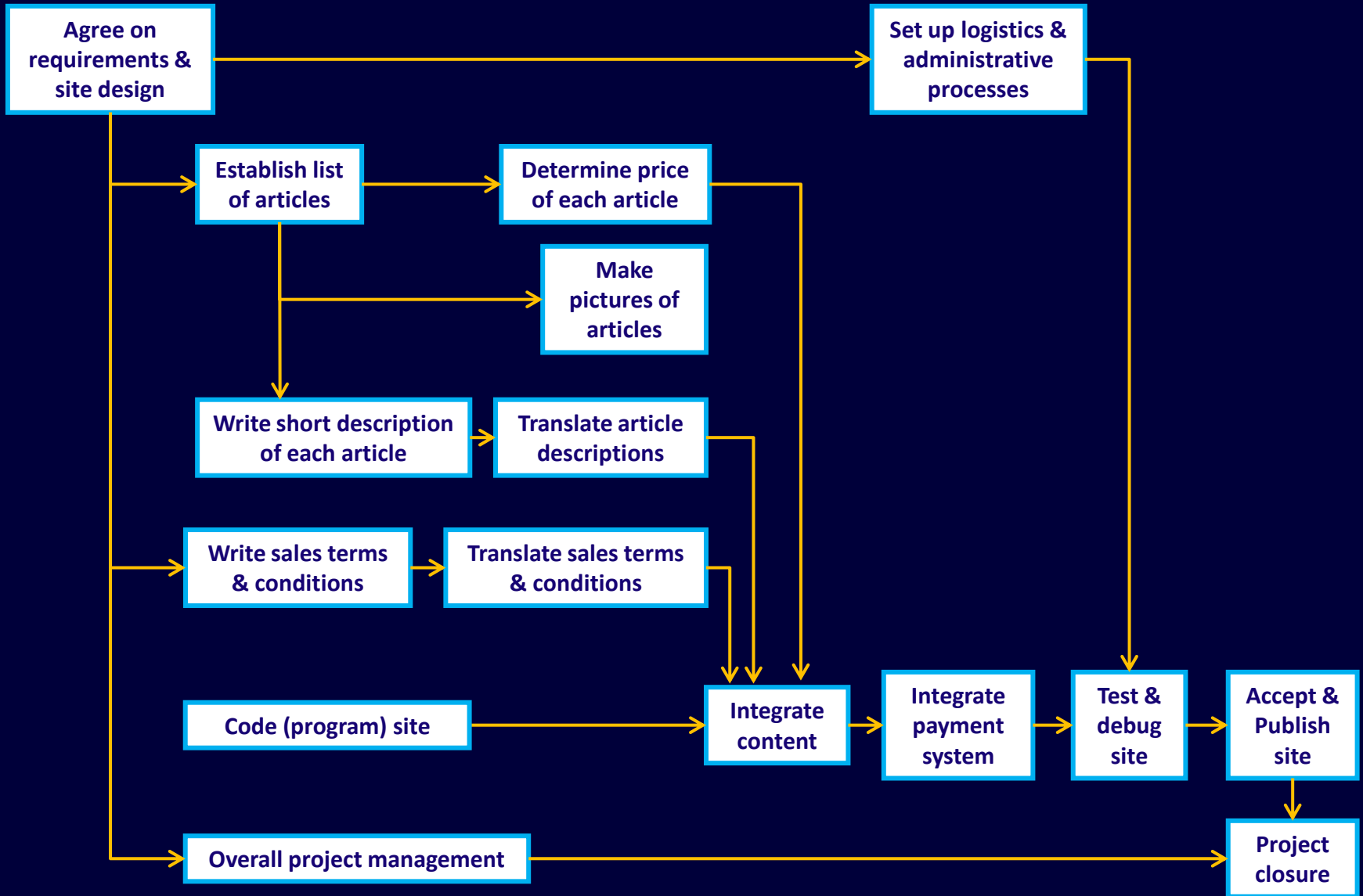
INSTITUTIONS (INDIRECT)

## Question 9 – text

- Mentally complete the **network diagram** on the next page by drawing the **2 arrows** that are **missing**.



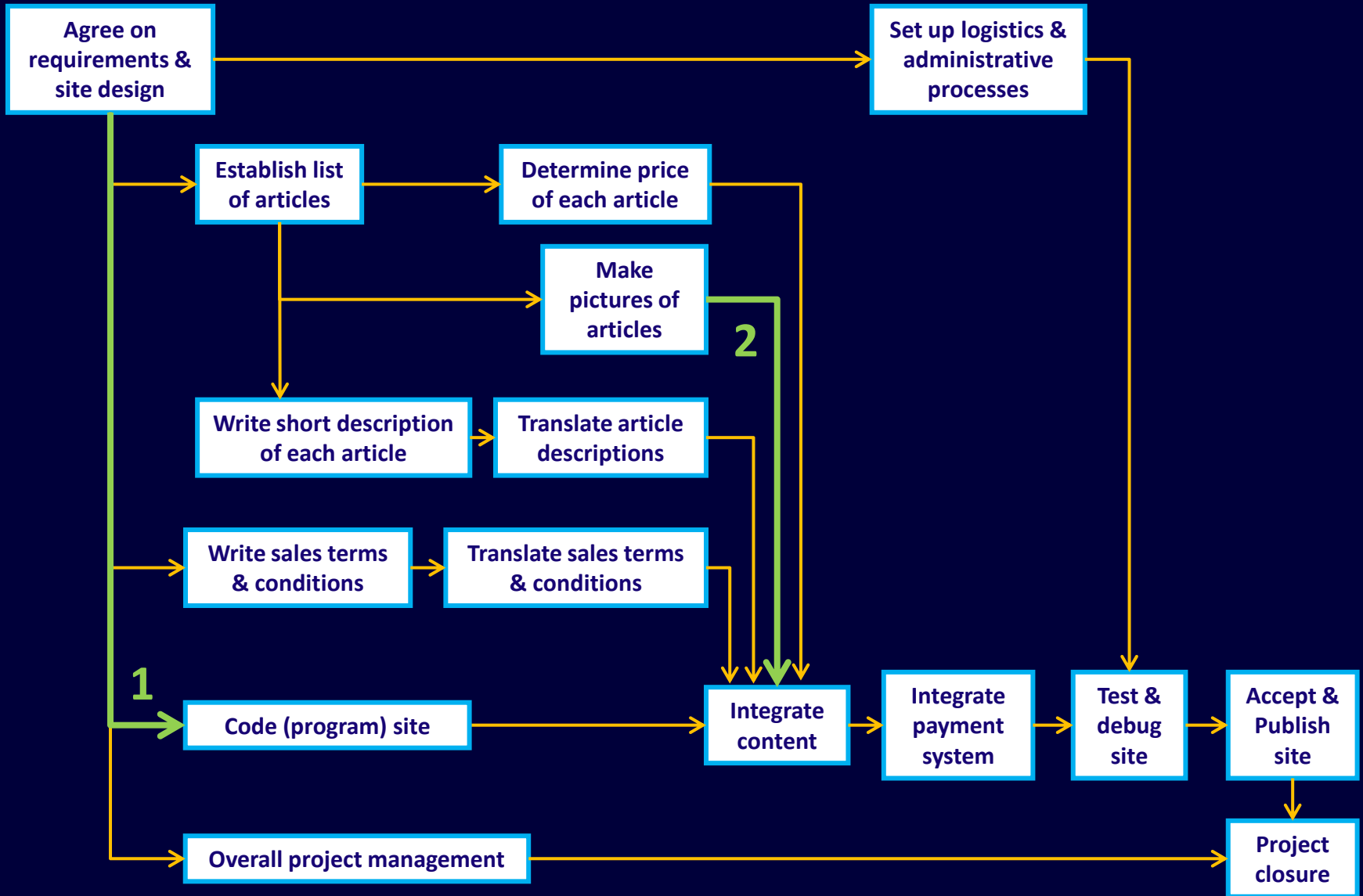
# Question 9 – diagram







# Answer 9 (2: complete)



# Question 10

➤ What are the **5 planning processes** involved in **establishing a project's schedule**, given its scope and requirements?

✓ **Project's scope and requirements.**

1) ...

2) ...

3) ...

4) ...

5) ...

➤ **Project's schedule.**

# Answer 10 (1 of 5)

➤ What are the **5 planning processes** involved in **establishing a project's schedule**, given its scope and requirements?

✓ **Project's scope and requirements.**

1) **Create the Work Breakdown Structure (WBS).**

2) ...

3) ...

4) ...

5) ...

➤ **Project's schedule.**

# Answer 10 (2 of 5)

➤ What are the **5 planning processes** involved in **establishing a project's schedule**, given its scope and requirements?

✓ **Project's scope and requirements.**

1) **Create the Work Breakdown Structure (WBS).**

2) **Define tasks.**

3) **...**

4) **...**

5) **...**

➤ **Project's schedule.**

# Answer 10 (3 of 5)

- What are the 5 planning processes involved in establishing a project's schedule, given its scope and requirements?
  - ✓ Project's scope and requirements.
    - 1) Create the Work Breakdown Structure (WBS).
    - 2) Define tasks.
    - 3) Sequence tasks.
    - 4) ...
    - 5) ...
  - Project's schedule.

# Answer 10 (4 of 5)

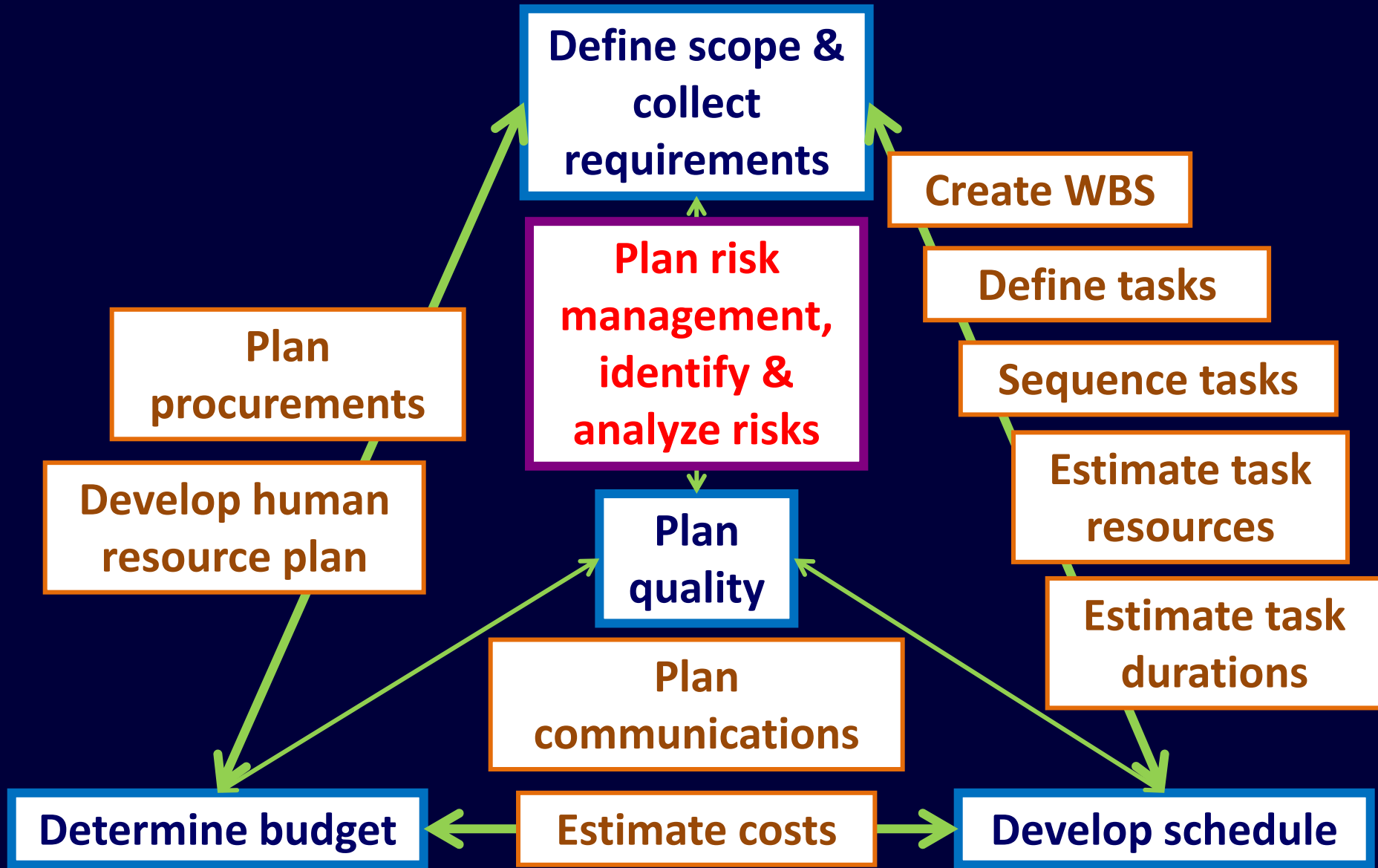
- What are the 5 planning processes involved in establishing a project's schedule, given its scope and requirements?
  - ✓ Project's scope and requirements.
    - 1) Create the Work Breakdown Structure (WBS).
    - 2) Define tasks.
    - 3) Sequence tasks.
    - 4) Estimate task resources.
    - 5) ...
  - Project's schedule.

# Answer 10 (5 of 5: complete!)

- What are the 5 planning processes involved in establishing a project's schedule, given its scope and requirements?
  - ✓ Project's scope and requirements.
    - 1) Create the Work Breakdown Structure (WBS).
    - 2) Define tasks.
    - 3) Sequence tasks.
    - 4) Estimate task resources.
    - 5) Estimate task durations.
  - Project's schedule.



# Reminder: Project planning processes

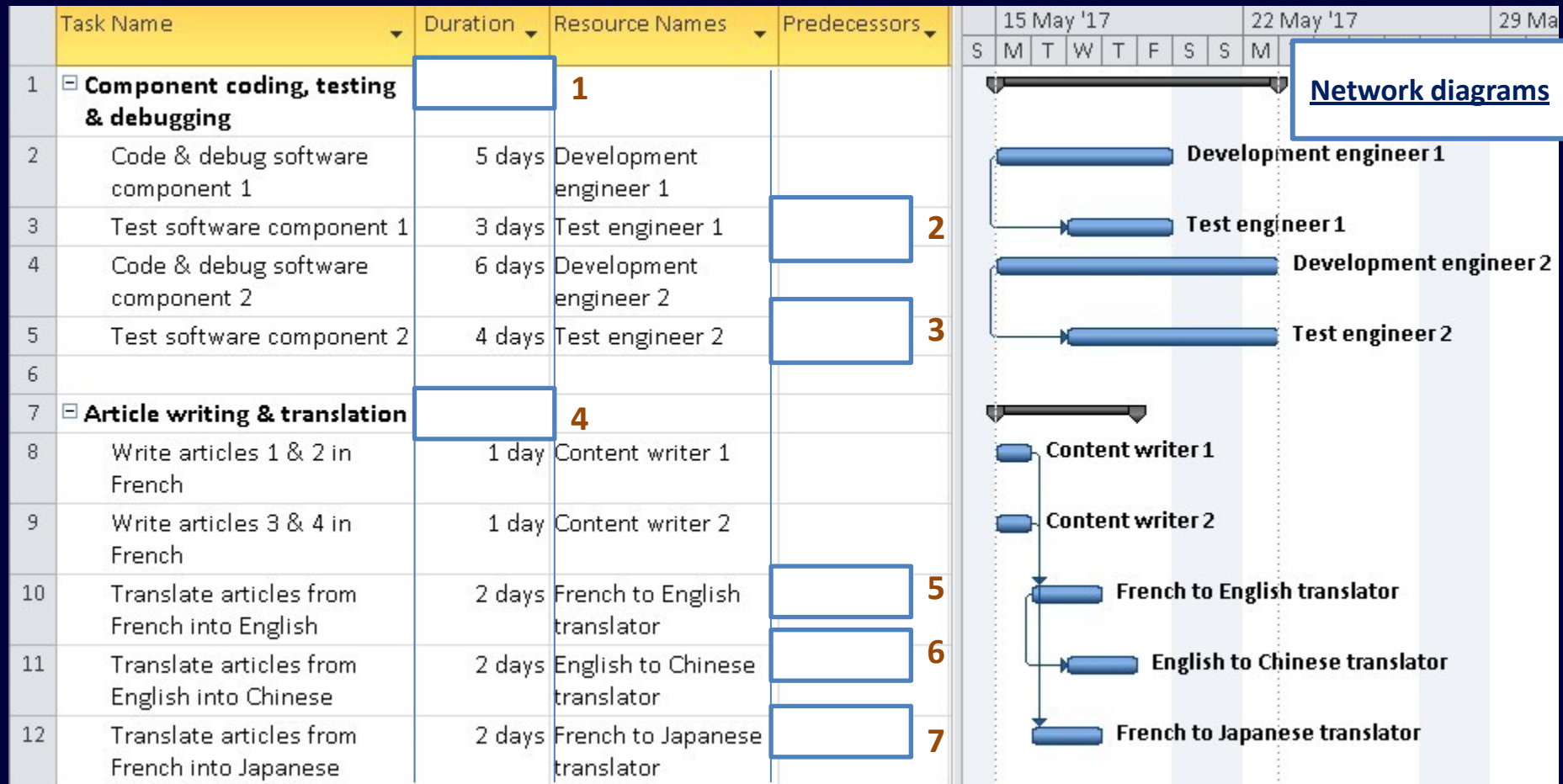


## Question 11 – text

- Mentally enter "Duration" and "Predecessors" information respectively in rectangles 1 and 4 and rectangles 2, 3, 5, 6 and 7 in the picture on the next page so that the information is consistent with the sequence of tasks for two work packages shown in the network diagrams in the right part of the picture.

(For practical purposes in this exercise, testing & debugging of a component are completed simultaneously, as shown in the 1st network diagram, and translation does not start until writing in French has been completed, as shown in the 2nd network diagram. Also note that no work is done during weekends.)

# Question 11 – Gantt view



# Answer 11 – part 1

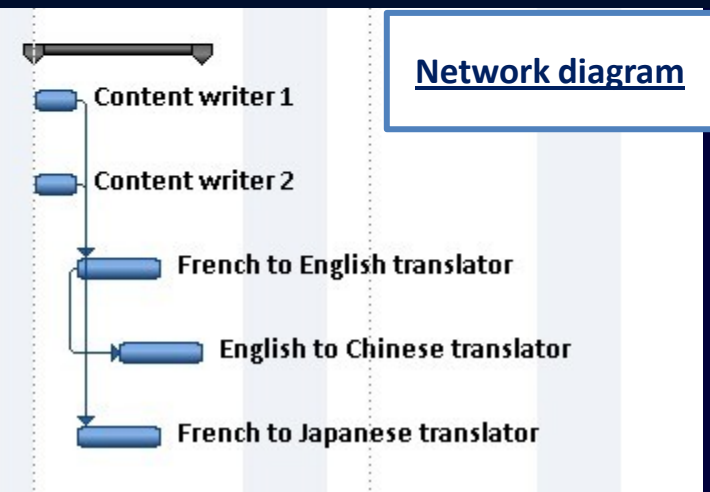
					15 May '17							22 May '17							29 Ma													
					S	M	T	W	T	F	S	S	S	M	T	W	T	F	S	S	S	M	T	W	T	F	S	S				
1	☐ <b>Component coding, testing &amp; debugging</b>	<b>6 days</b>	<b>1</b>																													
2	Code & debug software component 1	5 days	Development engineer 1																													
3	Test software component 1	3 days	Test engineer 1	2SS+2 days																												
4	Code & debug software component 2	6 days	Development engineer 2																													
5	Test software component 2	4 days	Test engineer 2	4SS+2 days																												
6																																

[Network diagram](#)

# Answer 11 – part 2

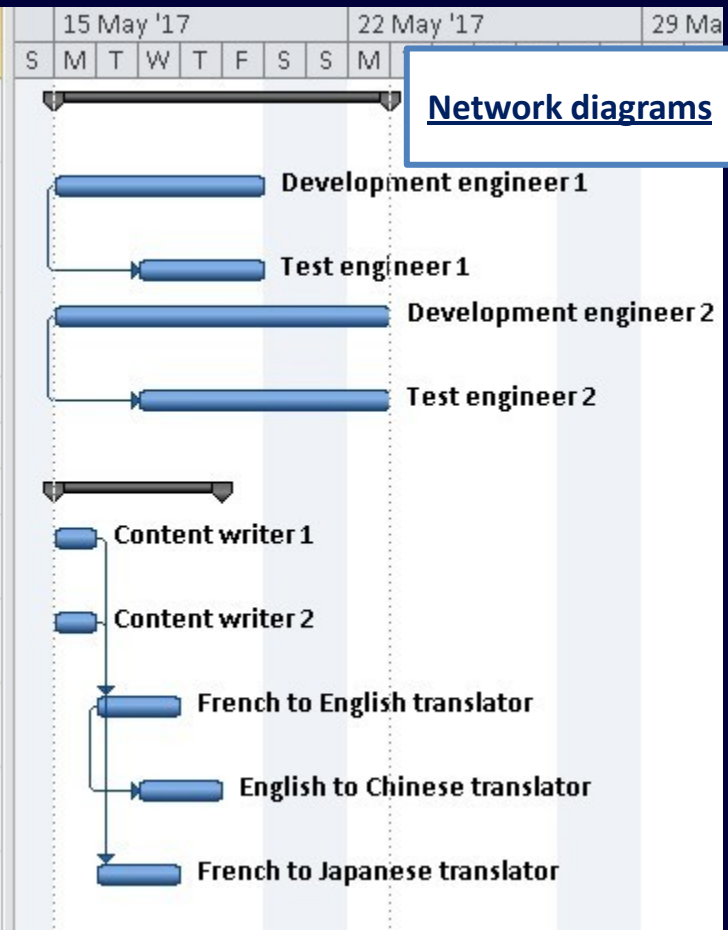
Task Name	Duration	Resource Names	Predecessors	15 May '17							22 May '17							29 Ma	
				S	M	T	W	T	F	S	S	M	T	W	T	F	S	S	M

7	Article writing & translation	4 days	4	
8	Write articles 1 & 2 in French	1 day	Content writer 1	
9	Write articles 3 & 4 in French	1 day	Content writer 2	
10	Translate articles from French into English	2 days	French to English translator	8;9
11	Translate articles from English into Chinese	2 days	English to Chinese translator	10SS+1 day
12	Translate articles from French into Japanese	2 days	French to Japanese translator	8;9



# Answer 11 – complete

Task Name	Duration	Resource Names	Predecessors
<b>Component coding, testing &amp; debugging</b>	<b>6 days</b>	<b>1</b>	
Code & debug software component 1	5 days	Development engineer 1	
Test software component 1	3 days	Test engineer 1	2SS+2 days
Code & debug software component 2	6 days	Development engineer 2	
Test software component 2	4 days	Test engineer 2	4SS+2 days
<b>Article writing &amp; translation</b>	<b>4 days</b>	<b>4</b>	
Write articles 1 & 2 in French	1 day	Content writer 1	
Write articles 3 & 4 in French	1 day	Content writer 2	
Translate articles from French into English	2 days	French to English translator	8;9
Translate articles from English into Chinese	2 days	English to Chinese translator	10SS+1 day
Translate articles from French into Japanese	2 days	French to Japanese translator	8;9



## Question 12 – text

- Take into account the "Resource" and "Duration" information provided in the excerpts of a Resource Sheet and Gantt view on the next page to calculate the "**Work(load)**" (in person-days) and "**Cost**" (in €) of the featured "Task", then mentally enter the values respectively in rectangles 1 and 2.

# Question 12 – Res'rcce sheet & Gantt view

Resource Name	Type	Max. Units	Std. Rate
R1	Work	100%	€ 400/day
R2	Work	100%	€ 360/day
R3	Work	100%	€ 320/day

Task Name	Duration	Resource Names	Work	Cost
Task	12 days	R1;R2[75%];R3[25%]		

1

2



# Answer 12 – part 1

Resource Name	Type	Max. Units	Std. Rate	Task Name	Duration	Resource Names	Work	Cost
R1	Work	100%	€ 400/day	Task	12 days	R1;R2[75%];R3[25%]	24 days	
R2	Work	100%	€ 360/day					
R3	Work	100%	€ 320/day					

1

2

**Workload:  $12 + 9 + 3 = 24$  person-days**

# Answer 12 – complete

Resource Name	Type	Max. Units	Std. Rate	Task Name	Duration	Resource Names	Work	Cost
R1	Work	100%	€ 400/day	Task	12 days	R1;R2[75%];R3[25%]	24 days	€ 9 000
R2	Work	100%	€ 360/day					
R3	Work	100%	€ 320/day					

**1**                      **2**

**Workload:  $12 + 9 + 3 = 24$  person-days**

**Cost:  $12 \times 400 + 9 \times 360 + 3 \times 320 = € 9,000$**

## Question 13

- As a project manager working for a software development contractor, you have estimated that the **total cost** of the work to be done for a client amounts to **€ 100,000** (including a "management reserve" to cover any possible estimation error). Assuming that your management requires a **20% profit margin**, what **price** should the client be quoted?

→ Price = € .....

## Answer 13

- As a project manager working for a software development contractor, you have estimated that the **total cost** of the work to be done for a client amounts to **€ 100,000** (including a "management reserve" to cover any possible estimation error). Assuming that your management requires a **20% profit margin**, what **price** should the client be quoted?

→ Price = € 125,000

# Answer 13 (illustrated)



- $\text{Margin\%} = \text{Margin} / \text{Price}$
- $\text{Margin\%} = (\text{Price} - \text{Cost}) / \text{Price}$
- $\text{Margin\%} = 1 - \text{Cost} / \text{Price}$
- $\text{Cost} / \text{Price} = 1 - \text{Margin\%}$
- $\text{Price} / \text{Cost} = 1 / (1 - \text{Margin\%})$
- $\text{Price} = \text{Cost} / (1 - \text{Margin\%})$

- $\text{Margin\%} = 20\% = 0.20 = 1/5$
- $\text{Price} = \text{Cost} / (1 - 1/5) = \text{Cost} / 4/5 = \text{Cost} \times 5/4 = (\text{Cost} / 4) \times 5$
- $\text{Cost} = 100\text{K}$
- $\text{Price} = 100\text{K} \times 5/4 = (100\text{K} / 4) \times 5 = 25\text{K} \times 5 = 125\text{K}$

# Question 14

➤ Which of the following statements related to project risks are generally true?

Minimizing/eliminating a risk may require adding tasks and/or resources.

Minimizing/eliminating a risk may result in additional costs.

Minimizing/eliminating a risk may result in a modification of the scope and requirements.

Minimizing/eliminating a risk should be postponed until the risk materializes.

# Answer 14

➤ Which of the following statements related to project risks are generally true?

Minimizing/eliminating a risk may require adding tasks and/or resources.

Minimizing/eliminating a risk may result in additional costs.

Minimizing/eliminating a risk may result in a modification of the scope and requirements.

Minimizing/eliminating a risk should be postponed until the risk materializes.